

## D. CONVERSION FROM RIGHT TO LEFT HAND RETRIEVE.

FIG. 4 - Drag set for right hand retrieve.

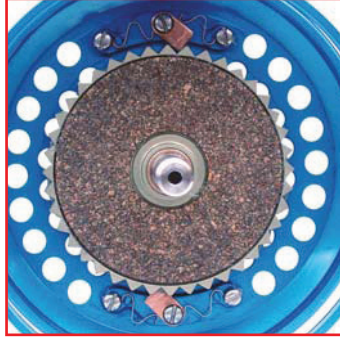
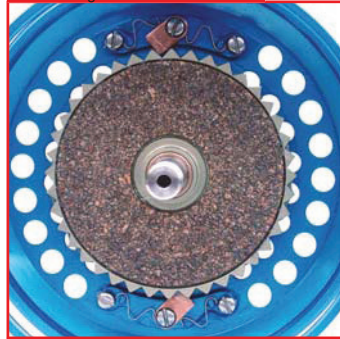


FIG 5. - Drag set for left hand retrieve.



### Step 1

Disassemble your reel as per instructions on the previous page.

### Step 2

Remove the Spindle O-Ring (see Exploded View of the reel on the previous page).

### Step 3

Remove the Clutch Assembly (see Exploded View of the reel on the previous page).

### Step 4

Arrange the pawl direction as per FIG. 3 or FIG. 4 on the left of this page.

### Step 5

Replace Clutch Assembly and Spindle O-Ring. Reassemble reel.

## E. PRODUCT INFORMATION

### Recommended Lubricants

Islander recommends the use of Super Lube® brand oil and grease with Teflon® for all lubricating application. Superlube® is manufactured by: Synco Chemical Cop., N.Y. Teflon® is a registered trademark of E.I. duPont DeNemours & co.

Oil: Super Lube® Multi-Purpose Synthetic-Based Oil with PTFE®.  
Grease: Super Lube® Multi-Purpose Lubricant with Teflon®.

If you need to return your reel to Islander for service, please contact:

### Islander Reels

6771 Kirkpatrick Crescent  
Saanichton B.C. V8M1Z8 Canada  
Phone 1-250-544-1440  
Fax 1-250-544-1450  
Email [info@islander.com](mailto:info@islander.com)  
[www.islander.com](http://www.islander.com)

Islander recommends that you remove the line from your reel before shipping it to Islander for service. To fix some problems, all the line has to be removed and Islander cannot guarantee that the line will be replaceable.